

# structo

WALL  
SYSTEMS



FITS PERFECTLY WITH GLASS  
WALLS

FLOOR TRACK

## FLOORSLIDE- **S32**

Maximum door height: **2600 mm\***

\* with 6mm glass if width is max 1100mm

Maximum door width: **1300 mm\***

\* with 6mm glass if height is max 2200mm

Suitable glasses with a  
thickness: **6 – 8,76 mm**



+372 666 5017



info@structo.ee



www.structo.ee

# FLOORSLIDE-

# S32

## TECHNICAL DESCRIPTION



FLOORSLIDE-S32 is an aluminum framed sliding door (single or pair) for glasses between 6 - 8,76mm.

The standard surface finish of aluminum profiles is natural (silver) anodizing, but it is also possible to order a painted surface according to the RAL colour catalogue.

Possible types of glass are tempered, laminated or tempered-laminated.

The surface of the glass can be bright, very bright, mass-tinted, background-painted or matte.

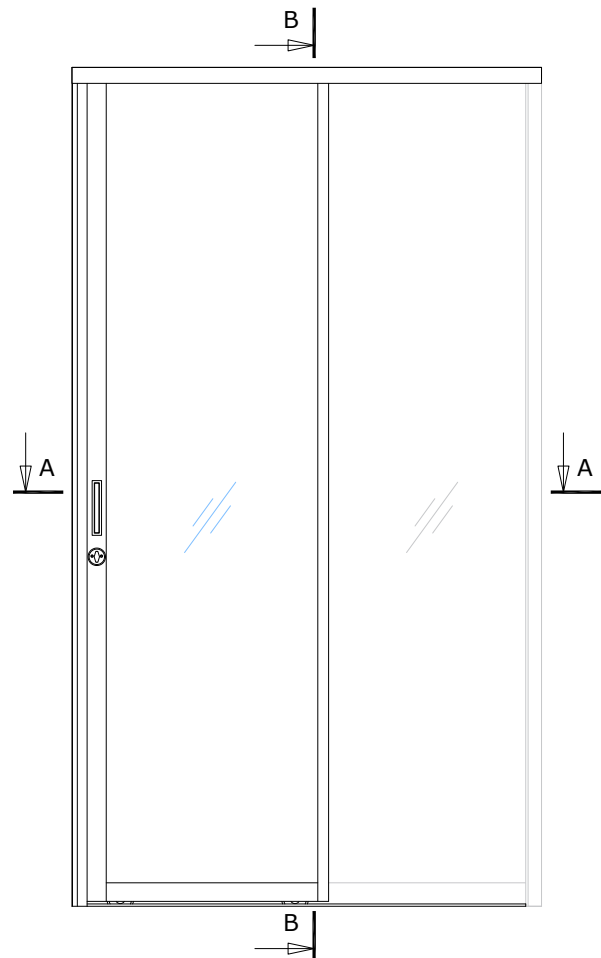
It's possible to use thin 15x30mm aluminum H-profiles to divide one glass panel into several panels. That enables to use different materials in the door panels, which can give the door panel an exciting and contrasting look.

Standard lock cases are ASSA 13787-28, Abloy 306-30 or Valnes E9790-30, but it is possible to use different lock cases. Other hardware (cylinder and/or twist knob must be compatible with chosen lock case).

Standard handle is built-in handle ETNA 28x163, but it is also possible to use other handles.

The structures adjacent to the product must be strong enough to allow profiles to be attached to them.

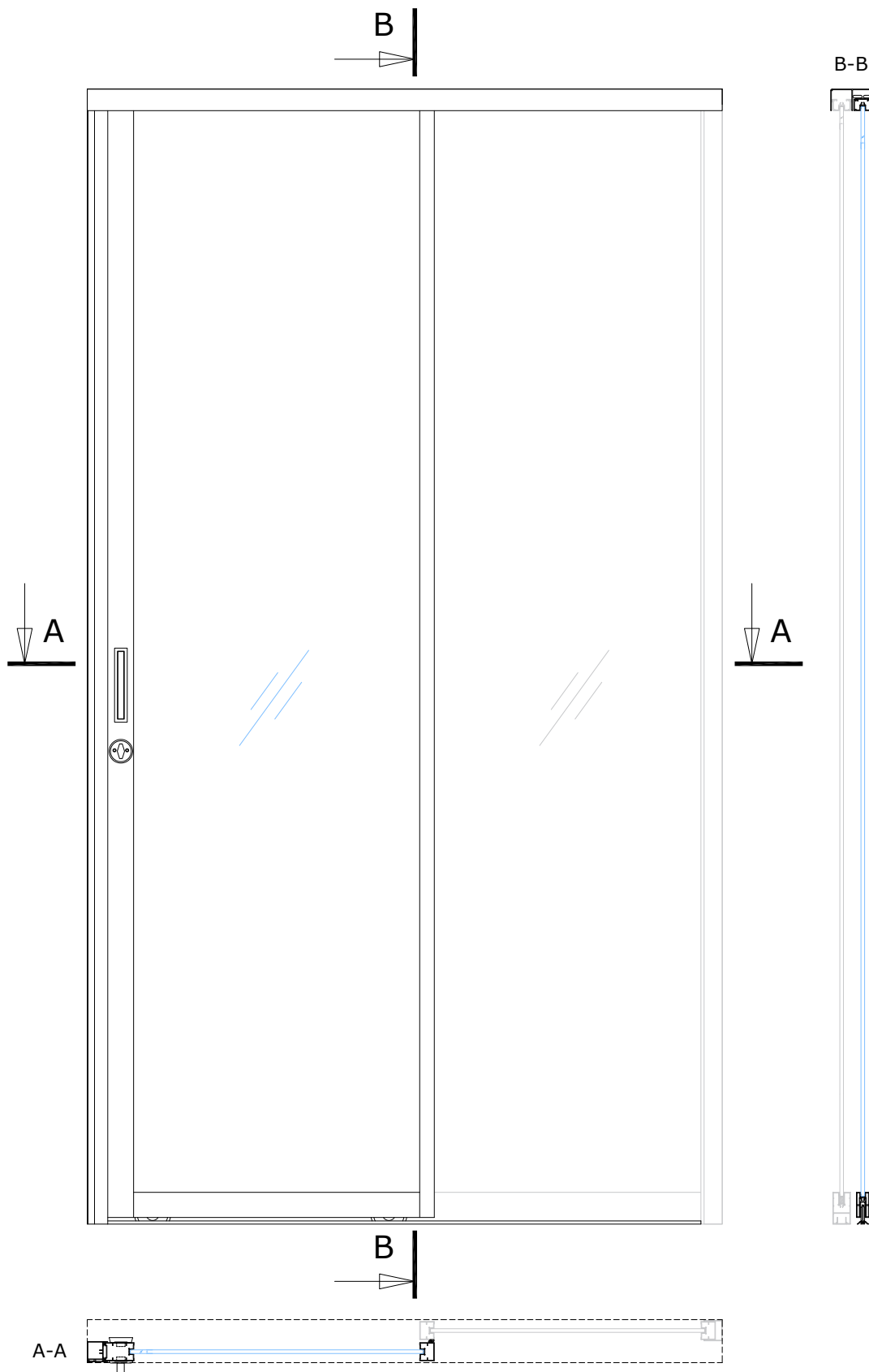
Maximum door height:	<b>2600 mm*</b>
* with 6mm glass if width is max 1100mm	
Maximum door width:	<b>1300 mm*</b>
* with 6mm glass if height is max 2200mm	
Suitable glasses with a thickness:	<b>6 – 8,76 mm</b>



# FLOORSLIDE-

# S32

# STANDARD SOLUTION



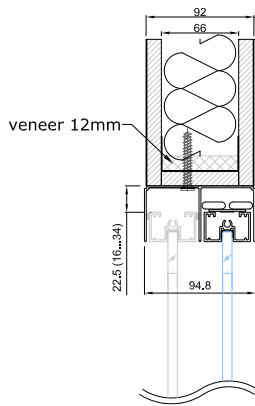
# FLOORSLIDE-

# S32

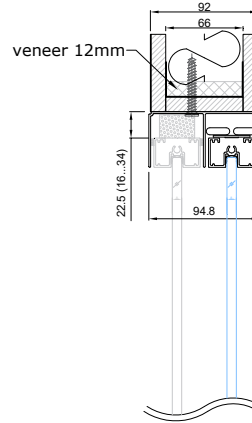
## CONNECTION UNITS MOUNTING INTO OPENING



CEILING CONNECTION WITH FLOORSLIDE B-B

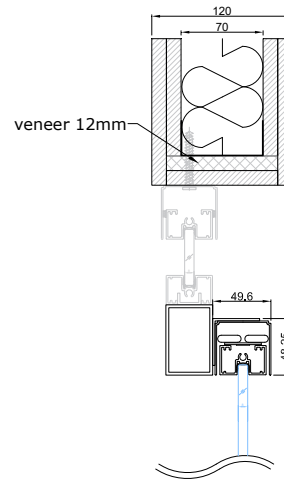


ALTERNATIVE MORE SOUNDPROOF CONNECTION WITH CEILING

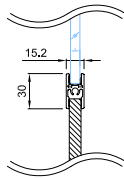


- seal, LU6, transparent
- P-seal 5,5\*9mm, black
- draught stop

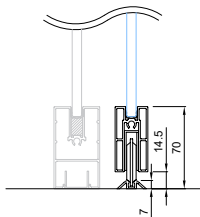
CONNECTION WITH CEILING WITH OVERLIGHT



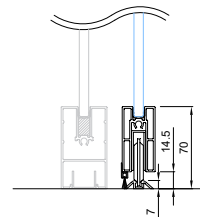
OPTIONAL HORIZONTAL MIDDLE CONNECTION WITH H-PROFILE FOR CONNECTING DIFFERENT MATERIALS



CONNECTION WITH FLOOR B-B



ALTERNATIVE MORE SOUNDPROOF CONNECTION WITH FLOOR B-B



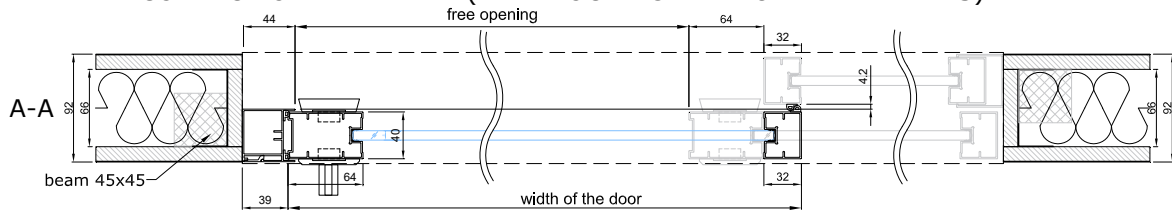
# FLOORSLIDE-

# S32

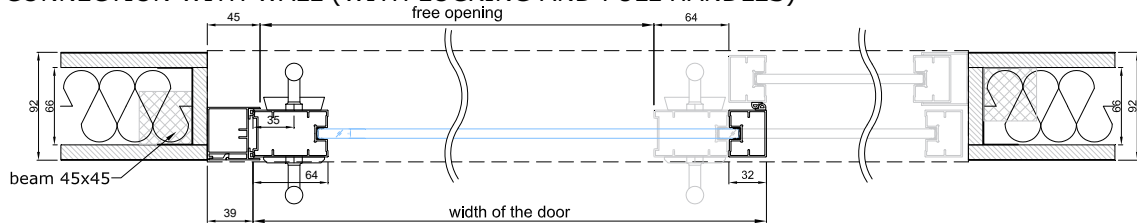
## CONNECTION UNITS MOUNTING INTO OPENING



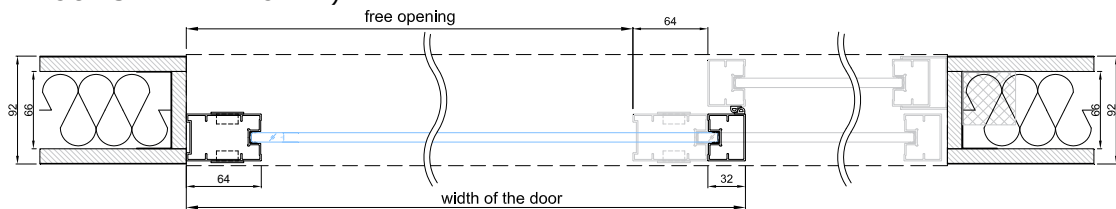
CONNECTION WITH WALL (WITH LOCKING AND BUILT-IN HANDLES)



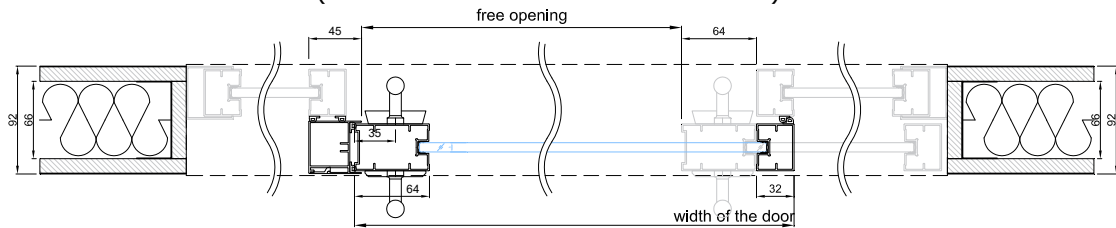
CONNECTION WITH WALL (WITH LOCKING AND PULL HANDLES)



CONNECTION WITH WALL (WITH BUILT-IN HANDLES AND WITHOUT STRIKER PROFILE)



CONNECTION WITH WALL (WITH LOCKING AND PULL HANDLES)



# FLOORSLIDE-

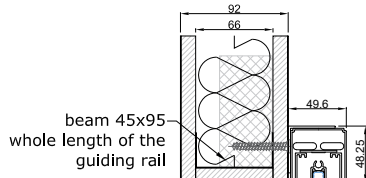
# S32

## CONNECTION UNITS MOUNTING ON A WALL

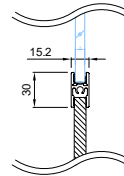


### CONNECTION WITH CEILING

B-B

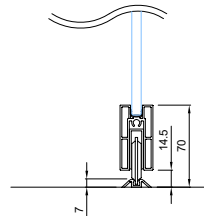


### OPTIONAL HORIZONTAL MIDDLE CONNECTION WITH H-PROFILE FOR CONNECTING DIFFERENT MATERIALS



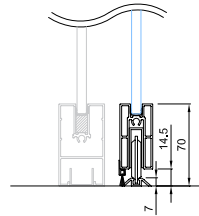
### CONNECTION WITH FLOOR

B-B



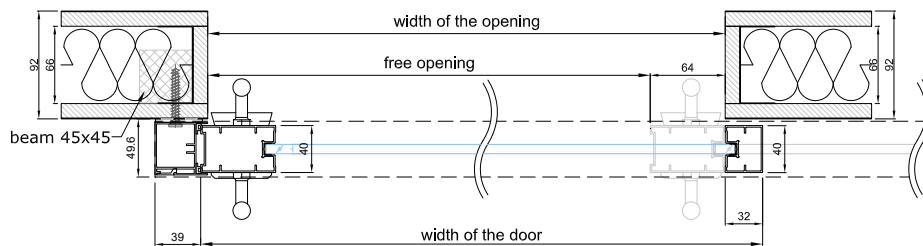
### ALTERNATIVE MORE SOUNDPROOF CONNECTION WITH FLOOR

B-B



- seal, LU6, transparent
- P-seal 5,5\*9mm, black
- draught stop

### CONNECTION WITH WALL (WITH LOCKING AND PULL HANDLES)



### CONNECTION WITH WALL (WITH BUILT-IN HANDLES)

